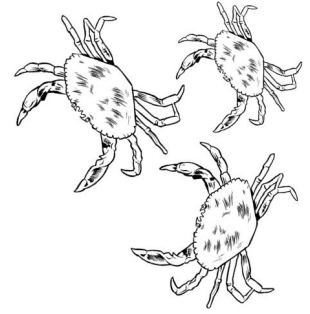


# Nature Bingo

*Let's explore the outdoors!*



Scientists spend a lot of time making observations of the world around them. They look for things like colors, shapes, and the way things move.

Today, we made lots of observations of a habitat, or place where animals live. You can practice your observation skills by exploring a local habitat in your own community.

## Nature Bingo:

Find an outdoor space in your community- a back or front yard, a park, or even the neighborhood around your home.

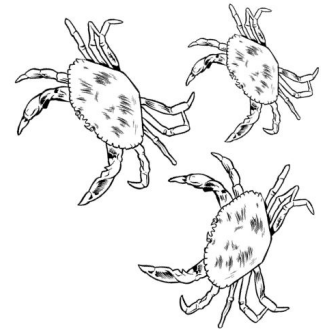
Practice making observations by searching for the items on your bingo card (next page).

Can you make observations to complete one full row? Can you complete the whole board?

Once you are done making observations, pick one thing you saw while making your observations and practice drawing it.

# Nature Bingo

*Let's explore the outdoors!*



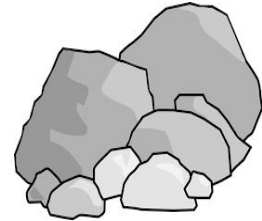
CLOUDS



bUTTERFLY



ANT



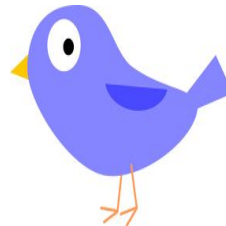
ROCKS



PINK FLOWER



LEAF



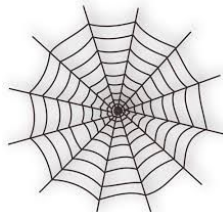
BIRD



THE SUN



TREE



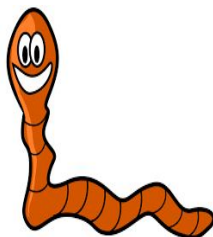
SPIDER WEB



DIRT



GRASS



WORM



WATER



YELLOW FLOWER



LADYBUG